

LED Source



Provide excellent lumen output, the best stability and excellent visual perception.
(Cree, Nichia, Osram, Bridgelux & etc. is optional)



Photocell



UL / TUV Certificated
Switch on when illuminance <6 LUX
Switch off when illuminance > 50 LUX

3 Pin / 5 Pin / 7 Pin

LED Driver



High quality driver provide excellent stability, long lifetime and best working performance.

Surge Protector Device



25KA high quality Surge Protector Device, can avoid the loss by thunderstrike or surge effectively.

Glass is Optional



Glass cover is optional

Covenient Maintenance

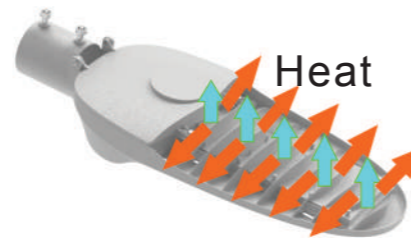


Tool Free Open and Maintanance



You can open the power supply cavity by rotating the butterfly screw with your fingers. The design of anti dropping screw is safer.

Excellent Heat Dissipation



Intelligent Control System



STAR LIGHT SERIES

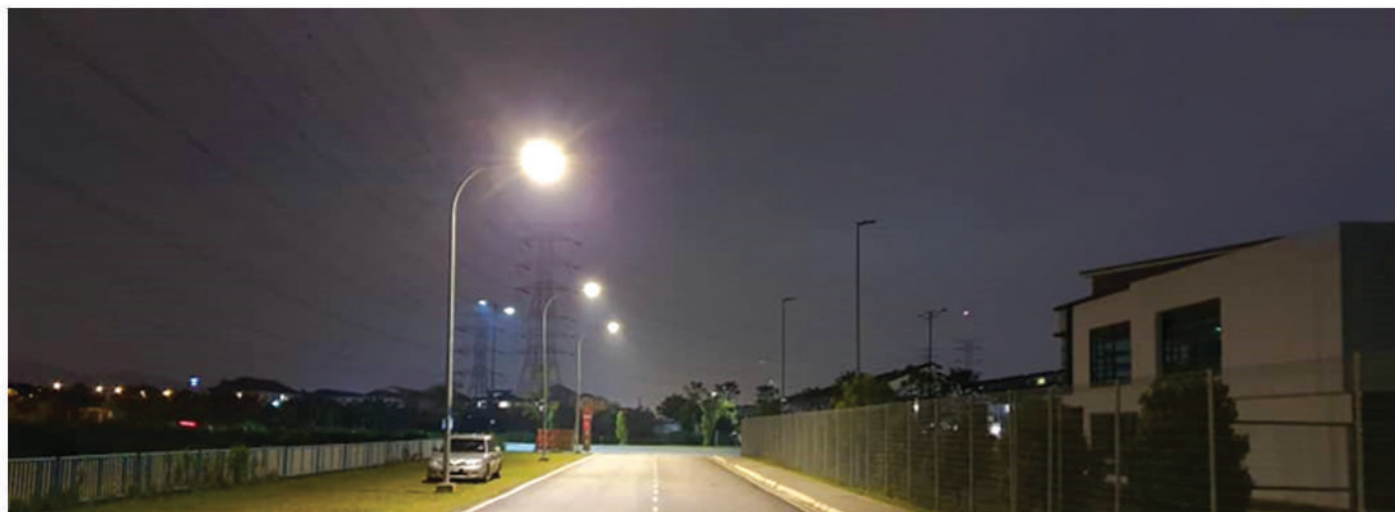
LED STREET LANTERN

ZEST LED S/B (1332445-D)

No. 1 Block C, Lot 757, Jalan Subang 3, Taman Industrial Sg Penaga, 47610 Subang Jaya, Selangor Darul Ehsan Tel: 03 8081 1326 / 7326 Fax: 03 8081 5326

STAR LIGHT SERIES

LED STREET LANTERN



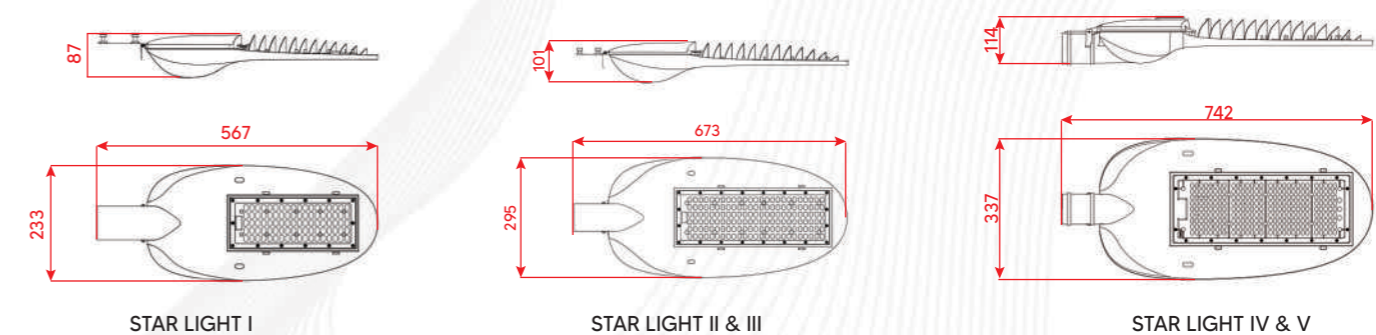
STAR LIGHT I 90W

STAR LIGHT II 120W & III 150W

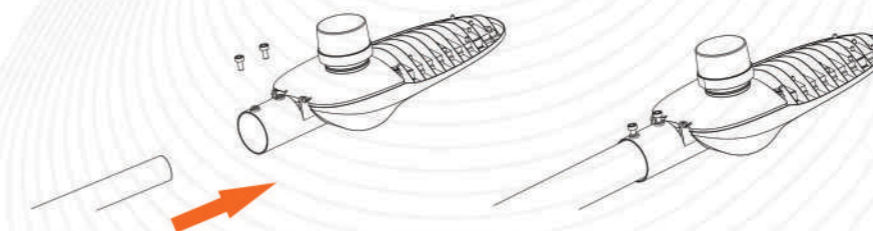
STAR LIGHT IV 180W & V 200W

Model	STAR LIGHT I	STAR LIGHT II	STAR LIGHT III	STAR LIGHT IV	STAR LIGHT V
Light Source	PHILIPS LUMILEDS	PHILIPS LUMILEDS	PHILIPS LUMILEDS	PHILIPS LUMILEDS	PHILIPS LUMILEDS
LED Series	3030	3030	3030	3030	3030
Power	90W	120W	150W	180W	200W
Luminous Flux (absolute)	10,650Lm	14,100Lm	17,550Lm	21,000Lm	23,300Lm
Luminaire Efficacy	>100Lm/W	>100Lm/W	>100Lm/W	>100Lm/W	>100Lm/W
Colour Temperature (CCT)	3000K/4000K/5000K	3000K/4000K/5000K	3000K/4000K/5000K	3000K/4000K/5000K	3000K/4000K/5000K
Colour Rendering Index (CRI)	75±5	75±5	75±5	75±5	75±5
LED Life Span	50,000	50,000	50,000	50,000	50,000
Lumen Maintenance @ 50,000 Hrs	70% Lumen Maintenance	70% Lumen Maintenance	70% Lumen Maintenance	70% Lumen Maintenance	70% Lumen Maintenance
Operating Temperature Range	-40°C ~ + 50°C	-40°C ~ + 50°C	-40°C ~ + 50°C	-40°C ~ + 50°C	-40°C ~ + 50°C
Working Humidity Range	10~90% RH	10~90% RH	10~90% RH	10~90% RH	10~90% RH
Driver	External	External	External	External	External
Operating Voltage	220-240Vac	220-240Vac	220-240Vac	220-240Vac	220-240Vac
Classification	Class I	Class I	Class I	Class I	Class I
Power Factor	≥0.95	≥0.95	≥0.95	≥0.95	≥0.95
Surge Protective Device (SPD)	External 10kV, 20kA	External 10kV, 20kA	External 10kV, 20kA	External 10kV, 20kA	External 10kV, 20kA
Housing Material	Die-Cast Aluminium Alloy	Die-Cast Aluminium Alloy	Die-Cast Aluminium Alloy	Die-Cast Aluminium Alloy	Die-Cast Aluminium Alloy
Glass Cover Material	Tempered Glass	Tempered Glass	Tempered Glass	Tempered Glass	Tempered Glass
Dimming Control Output	0-10V/PWM/DALI (Optional)				
NEMA Socket	Support NEMA, ZigBee Smart Lighting System (Optional)				
Ingress Protection For Luminaire	IP66	IP66	IP66	IP66	IP66
Installation Diameter (MM)	Horizontal Installation 57~63MM	Horizontal Installation 57~63MM	Horizontal Installation 57~63MM	Horizontal Installation 57~63MM	Horizontal Installation 57~63MM
Maintenance	Top Open Cover Access And Tool-Free Clip Lock At Gear Compartment				
Fixture Dimension, N.W	567x233x87mm, 3.0Kg	673x295x101mm, 4.5Kg	673x295x101mm, 4.5Kg	742x337x114mm, 6.3Kg	742x337x114mm, 6.3Kg
Compliance LM80 (LED Chip)	✓	✓	✓	✓	✓
Compliance LM79 (Luminaire)	✓	✓	✓	✓	✓
LED Driver	EN 61347-1, EN 61347-2-13, EN 55015/GB 17743, EN61000-3-2/GB 17625.1, EN 61000-3-3, EN 61000-4-2, -3, -4, -5, -6, -8, -11, EN 61547				
Luminaire	IEC 62722-1, IEC 62722-2-1, IEC 60598-1, IEC 60598-2-3, IEC 62471, IEC 62493, IEC 62031, IES LM79-08				

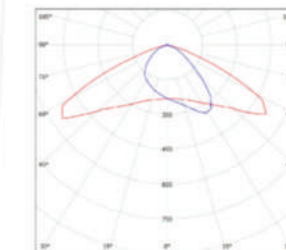
DIMENSION



INSTALLATION



PHOTOMETRIC



PRACTICAL APPLICATION



Note: Specifications are subject to change without prior notice

PRODUCTS FEATURES

- Super High Performance Price Ratio
 - Higher efficacy LED by Lumileds chip
 - Famous driver brand SOSEN
 - More convenient for installation and maintenance
- 50,000 Hours Life Span
- New Era Modular Design offered Extensive application and Easy Maintenance
- Wider Application
 - STAR LIGHT Series LED street light will provide the better lumen output, the better stability and very long lifetime.
 - Provide high uniformity and ensures no "DARK SPOTS" in the event of partial failure
- Provide 5 years warranty for whole fixture
- New Generation Dimmable Electronics Driver
- 25KA external Surge Protective Device (SPD) offered double layered of protection
- Multiple Configuration Optional
 - Tempered Glass Cover is optional
 - Photocell, timer dimming, DALI, 0-10V dimming is optional
 - Intelligent control system with 7PIN NEMA interface is optional
- It can be applied to streets, roads, highways, squares, parks and parking lots